

Filtro Idrja-Small



FILTRI DI ASPIRAZIONE PER VALVOLE DI RITEGNO
SUCTION SCREENS FOR CHECK VALVES

CARATTERISTICHE TECNICHE:

- RETE: ACCIAIO INOX AISI 304 o AISI 316
- MANICOTTO: ACCIAIO INOX AISI 304 o AISI 316
- CONNESSIONE FILETTATA MASCHIO UNI ISO 228
- GRADO DI FILTRAZIONE: CIRCA 13 MESHE (DA 3/8" A 2")
CIRCA 8 MESHE (DA 2"1/2 A 4")

TECHNICAL FEATURES:

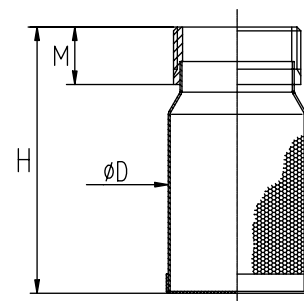
- NET-FILTER: STAINLESS STEEL AISI 304 OR AISI 316
- COUPLING: STAINLESS STEEL AISI 304 OR AISI 316
- THREADED END: GAS MALE UNI ISO 228
- FILTRATION: ABOUT 13 MESHES (FROM 3/8" TO 2")
ABOUT 8 MESHES (FROM 2"1/2 TO 4")



Filtri • Filters

DIMENSIONI E PESI
DIMENSIONS AND WEIGHTS

Misura Size	DN	Dimensioni in mm Dimensions in mm		Foro Hole ØD mm	Peso in gr Weight in gr	Pezzi per scatola Carton quantity
		H	M			
3/8"	8	55	15	1,0	12	24
1/2"	15	55	15	1,0	15	24
3/4"	20	62	15	1,0	25	16
1"	25	71	15	1,0	34	16
1"1/4	32	80	20	1,0	52	12
1"1/2	40	90	20	1,0	62	12
2"	50	101	20	1,0	86	6
2"1/2	65	111	25	1,8	135	1
3"	80	125	25	1,8	168	1
4"	100	144	25	1,8	253	1



Filtro Amita

FILTRI DI ASPIRAZIONE PER VALVOLE DI RITEGNO SUCTION SCREENS FOR CHECK VALVES

CARATTERISTICHE TECNICHE:

- RETE: ACCIAIO INOX AISI 304
- MANICOTTO: PA (NYLON)
- CONNESSIONE FILETTATA GAS MASCHIO UNI ISO 228
- GRADO DI FILTRAZIONE: CIRCA 18 MESHE

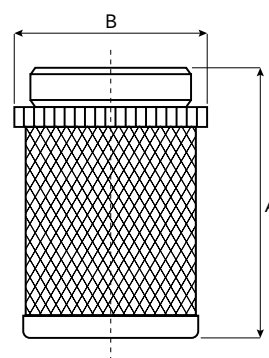
TECHNICAL FEATURES:

- NET-FILTER: STAINLESS STEEL AISI 304
- COUPLING: PA (NYLON)
- THREADED END: GAS MALE UNI ISO 228
- FILTRATION: ABOUT 18 MESHE



DIMENSIONI E PESI DIMENSIONS AND WEIGHTS

Misura Size	DN	Dimensioni in mm Dimensions in mm		Foro Hole ØD mm	Peso in gr Weight in gr	Pezzi per scatola Carton quantity
		A	B			
3/8"	8	49	23	1,0	6	30
1/2"	15	51	28	1,0	8	30
3/4"	20	57	34	1,0	12	15
1"	25	58	40	1,0	18	15
1"1/4	32	68	48	1,0	25	10
1"1/2	40	79	58	1,0	36	10
2"	50	95	68	1,0	55	5
2"1/2	65	99	83	1,0	78	1
3"	80	114	100	1,0	126	1
4"	100	130	127	1,0	172	1



Filtro Valvola Flangiata

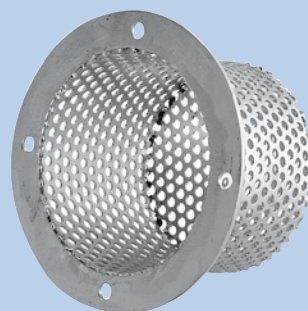
FILTRI DI ASPIRAZIONE PER VALVOLE DI RITEGNO FLANGIATE
SUCTION SCREENS FOR FLANGED CHECK VALVES

CARATTERISTICHE TECNICHE:

- RETE: ACCIAIO ZINCATO
- PRESSIONE NOMINALE DI ESERCIZIO: 16 BAR
- TEMPERATURA DI ESERCIZIO: -10°C - + 100°C

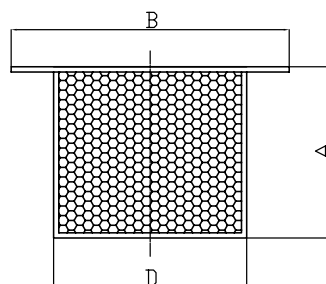
TECHNICAL FEATURES:

- NET-FILTER: GALVANIZED STEEL
- NOMINAL WORKING PRESSURE: 16 BAR
- WORKING TEMPERATURE: -10°C - + 100°C



DIMENSIONI E PESI
DIMENSIONS AND WEIGHTS

Misura Size	DN	Dimensioni in mm <i>Dimensions in mm</i>			Foro Hole ØD mm	Peso in kg <i>Weight in kg</i>	Pezzi per scatola <i>Carton quantity</i>
		A	B	D			
2"	50	80	155	110	6,0	0,50	1
2"1/2	65	100	175	130	6,0	0,60	1
3"	80	125	200	145	6,0	1,00	1
4"	100	150	210	165	6,0	1,19	1
5"	125	180	240	195	6,0	1,62	1
6"	150	205	275	220	6,0	2,12	1
8"	200	255	330	275	6,0	3,10	1
10"	250	300	385	330	6,0	4,30	1



Filtro a Y Ottone

FILTRI A Y FILETTATI IN OTTONE BRASS "Y" TYPE STRAINERS

CARATTERISTICHE TECNICHE:

- CORPO E PARTI METALLICHE: OTTONE
- TENUTA: NBR
- CONNESSIONI FILETTATE GAS FEMMINA UNI ISO 228
- PRESSIONE NOMINALE DI ESERCIZIO: 16 BAR
- TEMPERATURA DI ESERCIZIO: -20°C - +140°C
- GRADO DI FILTRAZIONE: CIRCA 400 μ MESHES

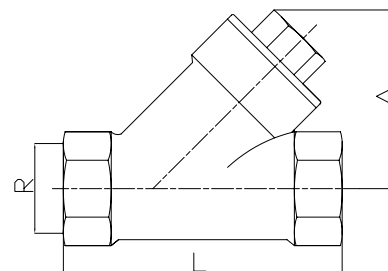
TECHNICAL FEATURES:

- BODY VALVE AND METALLIC PARTS: BRASS
- SEAL RING: NBR
- THREADED ENDS: UNI ISO 228 GAS FEMALE
- NOMINAL WORKING PRESSURE: 16 BAR
- WORKING TEMPERATURE: -20°C - +140°C
- FILTRATION: ABOUT 400 μ MESHES



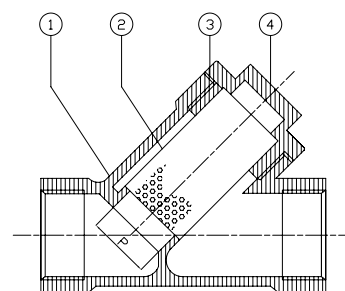
DIMENSIONI E PESI DIMENSIONS AND WEIGHTS

Misura Size	DN	Dimensioni in mm Dimensions in mm		Peso in gr Weight in gr	Pezzi per scatola Carton quantity
		L	A		
1/2"	15	57	38,7	130	24
3/4"	20	68	43,0	195	12
1"	25	77	52,0	280	10
1"1/4	32	90	67,0	530	5
1"1/2	40	100	73,5	690	2
2"	50	115	84,0	1205	1



CARATTERISTICHE COSTRUTTIVE CONSTRUCTION FEATURES

N.	Componenti Components	Materiale Material
1	Corpo • Body	Ottone • Brass
2	Filtro • Strainer	Acciaio Inox Aisi 304 • Stainless Steel Aisi 304
3	Guarnizione • Gasket	Fibra • Fiber
4	Tappo • Plug	Ottone • Brass



CARATTERISTICHE TECNICHE:

- LAVORAZIONE: ACCIAIO INOX STAMPATO
- CORPO E PARTI METALLICHE IN ACCIAIO INOX Aisi 304
- TRATTAMENTO SUPERFICIALE: SGRASSAGGIO, DECAPAGGIO ED ELETTROLUCIDATURA
- TENUTA: NBR (FPM SU RICHIESTA)
- CONNESSIONI FILETTATE GAS FEMMINA UNI ISO 228
- SALDATURE: A TIG SENZA APPORTO DI MATERIALE
- TEST IDRAULICO SU SALDATURE: ARIA COMPRESSA A 2 BAR SU OGNI FILTRO
- PRESSIONE NOMINALE DI ESERCIZIO: 16 BAR
- TEMPERATURA DI ESERCIZIO: -10°C - +90°C (CON GUARNIZIONE NBR)
-10°C - +150°C (CON GUARNIZIONE FPM)
- GRADO DI FILTRAZIONE: CIRCA 40 MESHES (DA 1/2" A 1")
CIRCA 18 MESHES (DA 1"1/4 A 2")

TECHNICAL FEATURES:

- MANUFACTURING PROCESS: PRESSED STAINLESS STEEL
- BODY VALVE AND METALLIC PARTS IN STAINLESS STEEL Aisi 304
- SURFACE TREATMENT: DEGREASING, PICKLING AND ELECTROPOLISHING
- SEAL RING: NBR (FPM ON REQUEST)
- THREADED ENDS: UNI ISO 228 GAS FEMALE
- WELDED JOINTS: MADE WITH TIG METHOD WITHOUT ANY ADDITIONAL MATERIAL
- HYDRAULIC TEST ON WELDED JOINTS: COMPRESSED AIR AT 2 BAR ON EACH FILTER
- NOMINAL WORKING PRESSURE: 16 BAR
- WORKING TEMPERATURE: -10°C - +90°C (WITH NBR SEAL)
-10°C - +150°C (WITH FPM SEAL)
- FILTRATION: ABOUT 40 MESHES (FROM 1/2" TO 1")
ABOUT 18 MESHES (FROM 1"1/4 TO 2")

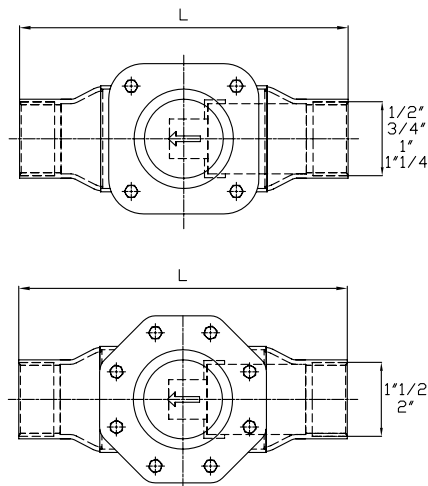


BASSISSIME PERDITE DI CARICO
VERY LOW FRICTION LOSSES

DIMENSIONI E PESI

DIMENSIONS AND WEIGHTS

Misura Size	DN	Dimensioni in mm Dimensions in mm			Peso in gr Weight in gr	Pezzi per scatola Carton quantity
		A	H	L		
1/2"	15	48,6	43,7	106	200	4
3/4"	20	54,6	52,9	128	285	3
1"	25	68,5	61,3	148	420	2
1"1/4	32	85,0	78,0	180	725	1
1"1/2	40	106,0	90,6	219	1020	1
2"	50	121,5	103,4	228	1400	1



CARATTERISTICHE COSTRUTTIVE CONSTRUCTION FEATURES

N.	Componenti Components	Materiale Material
1	Coperchio • Cover	1.4301 EN 10088 (Aisi 304)
2	Base coperchio • Cover base	1.4301 EN 10088 (Aisi 304)
3	Manicotto filettato lato mandata Outlet end	1.4301 EN 10088 (Aisi 304)
4	Corpo filtro • Body	1.4301 EN 10088 (Aisi 304)
5	Manicotto filettato lato aspirazione Inlet end	1.4301 EN 10088 (Aisi 304)
6	Reggifiltro • Filter net holder	1.4301 EN 10088 (Aisi 304)
7	Rete filtro • Filter net	1.4301 EN 10088 (Aisi 304)
8	O-ring • O-ring	NBR, FPM

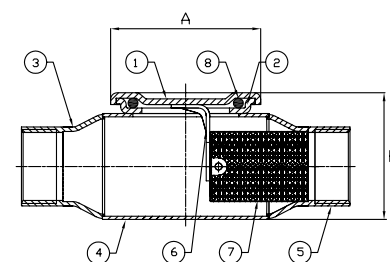


DIAGRAMMA PERDITE DI CARICO
FRICITION LOSSES DIAGRAM

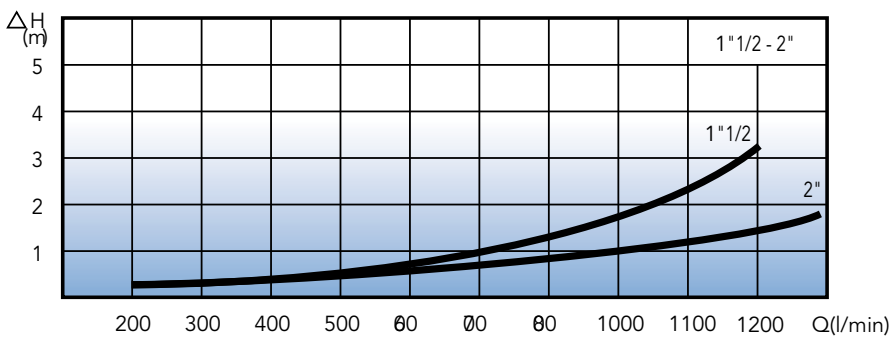
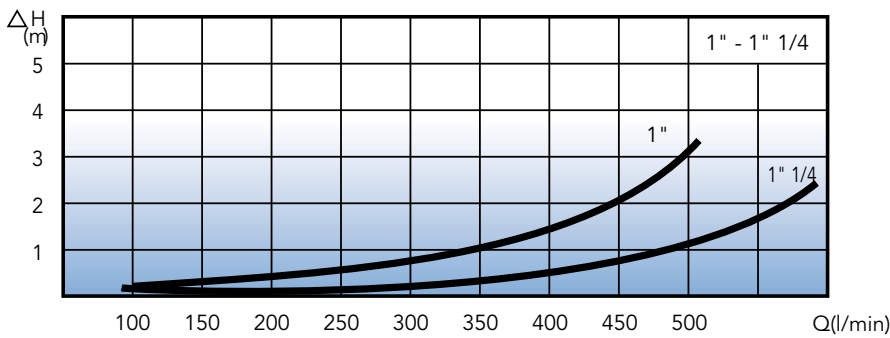
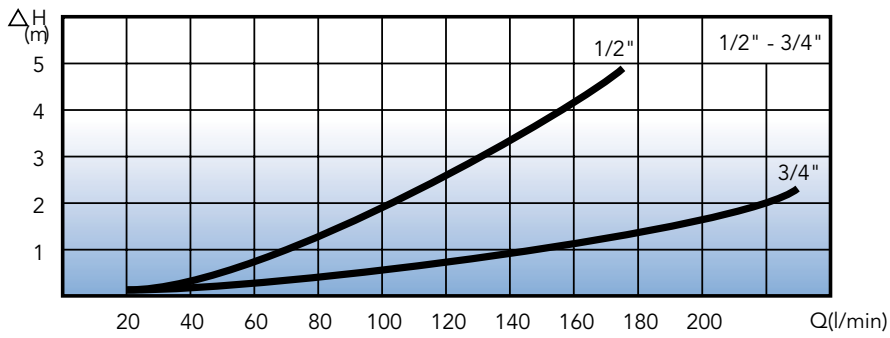
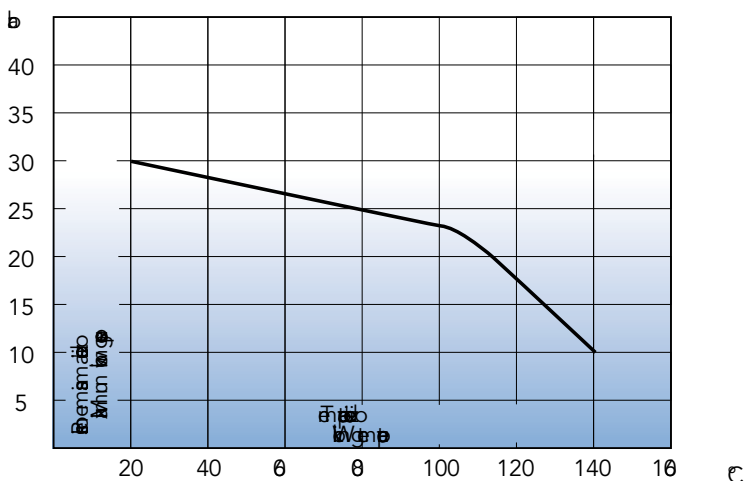


DIAGRAMMA PRESSIONE - TEMPERATURA
PRESSURE - TEMPERATURE DIAGRAM



Filtro a Y



FILTRI A Y FILETTATI INOX STAINLESS STEEL THREADED "Y" TYPE STRAINERS

CARATTERISTICHE TECNICHE:

- CORPO E PARTI METALLICHE: ACCIAIO INOX AISI 316
- GUARNIZIONE: PTFE
- CONNESSIONI FILETTATE GAS FEMMINA UNI ISO 228
- PRESSIONE NOMINALE DI ESERCIZIO: 40 BAR
- TEMPERATURA DI ESERCIZIO: -20°C - +200°C

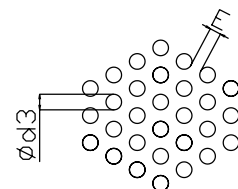
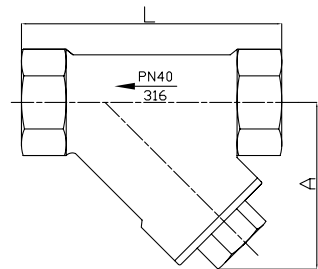
TECHNICAL FEATURES:

- BODY VALVE AND METALLIC PARTS: STAINLESS STEEL AISI 316
- SEAL: PTFE
- THREADED ENDS: UNI ISO 228 GAS FEMALE
- NOMINAL WORKING PRESSURE: 40 BAR
- WORKING TEMPERATURE: -20°C - +200°C



DIMENSIONI E PESI DIMENSIONS AND WEIGHTS

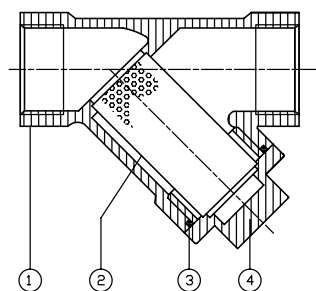
Misura Size	DN	Dimensioni in mm Dimensions in mm				Peso in kg Weight in kg	Pezzi per scatola Carton quantity
		A	L	Ød3	E		
1/4"	8	30	65	1,0	1,0	0,29	20
3/8"	10	30	65	1,0	1,0	0,21	20
1/2"	15	40	65	1,0	1,0	0,22	15
3/4"	20	45	80	1,0	1,0	0,35	10
1"	25	55	90	1,0	1,0	0,66	5
1"1/4	32	65	105	1,0	1,0	0,77	3
1"1/2	40	70	120	1,0	1,0	1,15	2
2"	50	85	140	1,0	1,0	1,76	1



Screen Detail

CARATTERISTICHE COSTRUTTIVE CONSTRUCTION FEATURES

N.	Componenti Components	Materiale Material
1	Corpo • Body	Acciaio Inox Aisi 316 • Stainless Steel A.316
2	Filtro • Strainer	Acciaio Inox Aisi 316 • Stainless Steel A.316
3	Guarnizione • Gasket	Teflon • PTFE
4	Tappo • Plug	Acciaio Inox Aisi 316 • Stainless Steel A.316



VERSIONI FORNIBILI SU RICHIESTA • MODELS AVAILABLE ON REQUEST

Tipo di filettatura Type of thread	1/4"	3/8"	1/2"	3/4"	1"	1"1/4	1"1/2	2"
NPT	X	X	X	X	X	X	X	X

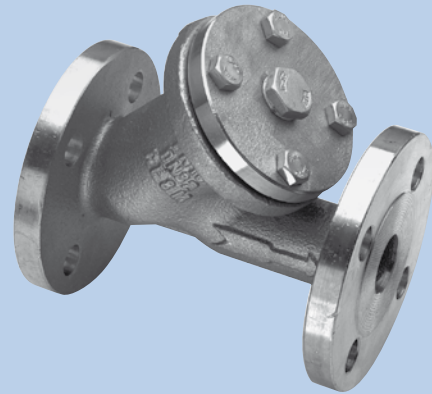
Filtro a Y Flangiato



FILTRI A Y FLANGIATI INOX STAINLESS STEEL FLANGED "Y" TYPE STRAINERS

CARATTERISTICHE TECNICHE:

- CORPO E PARTI METALLICHE: ACCIAIO INOX AISI 316
- GUARNIZIONE: PTFE
- CONNESSIONI FLANGIATE UNI ISO 2278 PN 16
- PRESSIONE NOMINALE DI ESERCIZIO: 16 BAR
- TEMPERATURA DI ESERCIZIO: -30°C - +240°C

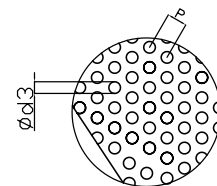
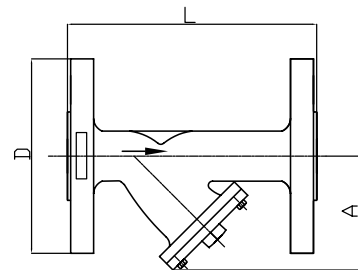


TECHNICAL FEATURES:

- BODY VALVE AND METALLIC PARTS: STAINLESS STEEL AISI 316
- SEAL: PTFE
- FLANGED ENDS UNI ISO 2278 PN 16
- NOMINAL WORKING PRESSURE: 16 BAR
- WORKING TEMPERATURE: -30°C - +240°C

DIMENSIONI E PESI DIMENSIONS AND WEIGHTS

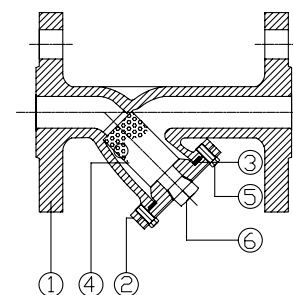
Misura Size	DN	Dimensioni in mm Dimensions in mm					Peso in kg Weight in kg	Pezzi per scatola Carton quantity
		A	D	L	P	Ø d3		
1/2"	15	75	95	130	2	1,0	1,95	1
3/4"	20	90	105	150	2	1,0	2,75	1
1"	25	100	115	160	2	1,0	3,70	1
1"1/4	32	115	140	180	2	1,0	5,90	1
1"1/2	40	130	150	200	2	1,0	6,40	1
2"	50	150	165	230	2	1,0	8,90	1
2"1/2	65	190	185	290	3.5	2,0	12,95	1
3"	80	200	200	310	3.5	2,0	18,15	1
4"	100	230	220	350	3.5	2,0	24,30	1



Screen Detail

CARATTERISTICHE COSTRUTTIVE CONSTRUCTION FEATURES

N.	Componenti Components	Materiale Material
1	Corpo • Body	Acciaio Inox Aisi 316 • S. S. Aisi 316
2	Coperchio • Cover	Acciaio Inox Aisi 316 • S. S. Aisi 316
3	Guarnizione • Gasket	Teflon • PTFE
4	Filtro • Strainer	Acciaio Inox Aisi 316 • S. S. Aisi 316
5	Vite • Bolt	Acciaio Inox Aisi 316 • S. S. Aisi 316
6	Tappo • Plug	Acciaio Inox Aisi 316 • S. S. Aisi 316



VERSIONI FORNIBILI SU RICHIESTA • MODELS AVAILABLE ON REQUEST

Misura Size	5"	6"	8"
	X	X	X